



### Organizing Committee

Hans-Dieter Volk, Alf Hamann, Andreas Radbruch, Gerd Burmester, Birgit Sawitzki, Chiara Romagnani, Alexander Scheffold, Max Löhning, Susanne Hartmann

### Coordination & Registration

Kirsten Kindler  
sfb650@charite.de  
phone: +49 30 450 513 302  
Birgit Röders  
birgit.roeders@charite.de  
phone: +49 30 84452820

SFB650

sponsored by



ResearchCenter ImmunoSciences | RCIS



### Conference Venue

Berlin-Brandenburgische Akademie der Wissenschaften  
Leibniz Saal  
Markgrafenstraße 38  
10117 Berlin  
[http://www.bbaw.de/service/lageplan\\_anfahrt](http://www.bbaw.de/service/lageplan_anfahrt)

#### → **Schönefeld:**

S9 to Schönhauser Allee,  
change to Metro U2  
(direction Ruhleben) to Hausvogteiplatz

#### → **Tegel:**

Bus TXL to Friedrichstraße/Unter den Linden

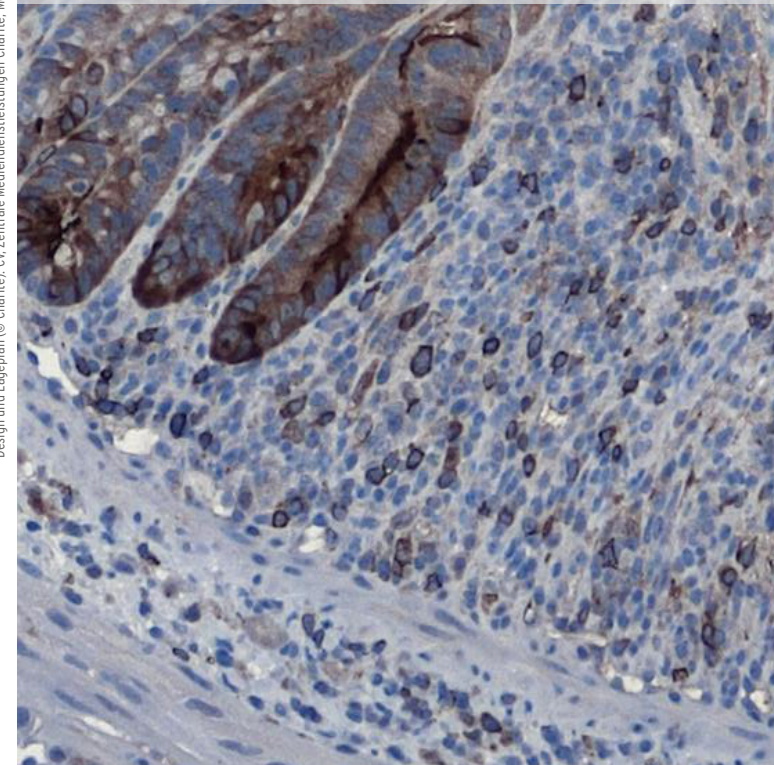
#### 🚉 **Hauptbahnhof:**

S5, S7, S9, S75 to Friedrichstraße,  
change to U6  
(direction Alt-Mariendorf) to Französische Straße

Cellular approaches to a suppression  
of unwanted immune reactions  
- from bench to bedside -

Sonderforschungsbereich 650  
International Symposium  
1<sup>st</sup> and 2<sup>nd</sup> of November 2016

Design und Lageplan © Charité; CV, Zentrale Medizindienstleistungen Charité; Motiv: Anja Kühn





Tuesday, November 1<sup>st</sup>

10:00 Introduction Hans-Dieter Volk

**Session I  
Immunological Memory**

Chairs: Ria Baumgrass and Max Löhning

10:15 [Mohini Gray](#)

B cell contribution to autoimmune pathology: unusual messages in V gene sequences

10:45 [Julia Polansky](#)

Epigenetic reprogramming in memory formation of human CD4+ T cells

11:05 [Weiguo Cui](#)

Transcriptional control of effector and memory T cell differentiation

Coffee break

12:05 [Svenja Steinfeld](#)

Tissue resident memory cells in helminth infection

12:25 [Tobias Alexander](#)

Reset of tolerance by ablation of a pathogenic memory in chronic inflammatory diseases

Lunch break

13:45 **Poster Session**

14:45 [Thomas Gebhardt](#)

Tissue-resident memory T cells and immune equilibrium in infection and cancer

**Session II  
Novel targeted immunotherapy**

Chairs: Margitta Worm and Wolfgang Uckert

15:15 [Lucienne Chatenoud](#)

Immune tolerance in autoimmunity and transplantation: the respective role of FoxP3+ regulatory T cells and T cell anergy

15:45 [Karl Sebastian Lang](#)

Enforced viral replication determines outcome of disease

Coffee break

16:45 [Alf Hamann](#)

Immunoengineering -active interventions to modulate the immune response

17:05 [Matthias v. Herrath](#)

Pathology and immune regulation of type 1 diabetes

17:35 [Carolin Daniel](#)

Targeting immune tolerance in autoimmune type 1 diabetes

18:05 [David Klatzmann](#)

The promise of low-dose interleukin-2 therapy for autoimmune and inflammatory diseases

19:30 Dinner Invited speakers and chairs

Wednesday, November 2<sup>nd</sup>

9:00 **Session III**

**Precision medicine in immunology**

Chairs: Nina Babel and Anja Kühl

9:00 [Hans-Dieter Volk](#)

Biomarkers: from mechanistic side-studies of clinical trials on safety, PK/PD, and therapy response to patient stratification

9:20 [Femke v. Wijk](#)

Dual identity and oligoclonality of Treg in chronic inflammation

9:50 [Birgit Sawitzki](#)

Multiparametric leukocyte profiling to reveal disease- and treatment-related differences in composition and function

10:10 [Thomas Höfer](#)

Regulation of memory T cell development inferred from single-cell fate mapping

Coffee break

11:05 [Andreas Radbruch](#)

Molecular adaptation of effector/memory T lymphocytes to chronic inflammation

11:25 [Oliver Klein](#)

In situ imaging mass spectrometry for spatial determination of pathophysiological processes

**Session IV  
Immune regulation**

Chairs: Thomas Häupl and Hyun-Dong Chang

11:40 [Michael Reth](#)

Nanobiology of B cell activation

12:10 [Petra Reinke](#)

Adoptive regulatory T cell therapy - from bench to bedside -

Lunch break

12:30 [Simon Fillatreau](#)

Autoreactive Treg

13:40 [Bruce Blazar](#)

Adoptive regulatory T cells to control graft-versus-host disease

14:10 [Alexander Scheffold](#)

Antigen-specific tolerance in humans mediated by regulatory T cells against airborne antigens

14:30 [Tobias Bopp](#)

Context- and tissue-specific regulation of immune responses by regulatory T cells

## Confirmed Speakers

Tobias Alexander | Berlin | Germany

Bruce Blazar | Minneapolis | USA

Tobias Bopp | Mainz | Germany

Lucienne Chatenoud | Paris | France

Weiguo Cui | Milwaukee | USA

Carolin Daniel | Munich | Germany

Simon Fillatreau | Paris | France

Thomas Gebhardt | Melbourne | Australia

Mohini Gray | Edinburgh | UK

Alf Hamann | Berlin | Germany

Matthias v. Herrath | La Jolla | USA

Thomas Höfer | Heidelberg | Germany

David Klatzmann | Paris | France

Oliver Klein | Berlin | Germany

Karl Sebastian Lang | Essen | Germany

Julia Polansky | Berlin | Germany

Andreas Radbruch | Berlin | Germany

Petra Reinke | Berlin | Germany

Michael Reth | Freiburg | Germany

Birgit Sawitzki | Berlin | Germany

Alexander Scheffold | Berlin | Germany

Svenja Steinfeld | Berlin | Germany

Hans-Dieter Volk | Berlin | Germany

Femke v. Wijk | Utrecht | The Netherlands